

# CIVIC LIFE TODAY



## The State of Global Civic Engagement

Deep Dive On

### EDUCATION

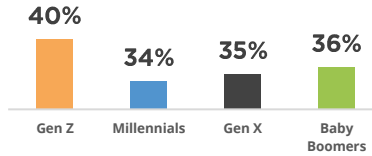
#### DEMOGRAPHIC BREAK DOWN



**36%**

Of people are concerned about education when compared to other issues

#### GENERATIONAL BREAKDOWN OF INTEREST IN ISSUE AREA



**35%**

Of **MEN** said education was one of their top areas of concern



**37%**

Of **WOMEN** said education was one of their top areas of concern

\*those identifying as non-binary or other <0%

#### WHY PEOPLE ARE TAKING ACTION



It makes me feel good to do something for others (**41%**)

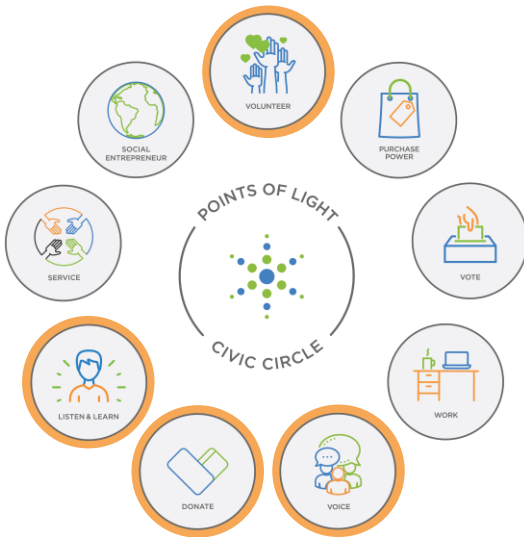


I believe the actions of one person can go a long way in making a difference (**39%**)



My actions have inspired many other people to act (**29%**)

#### HOW PEOPLE ARE TAKING ACTION



[Points of Light's Civic Circle®](#) represents a person's power to lead, lend support and take action for causes they care about, and to lead a civic life. People can engage through one or several elements of the Civic Circle®.

#### TOP ACTIONS TAKEN

Took time to learn about the cause or social issue (**LISTEN & LEARN**)

**71%**

Posted or shared content on social media platform (**VOICE**)

**69%**

Intentionally helped someone else (**VOLUNTEER**)

**67%**

#### MOST INFLUENTIAL ACTIONS

Intentionally helped someone else (**VOLUNTEER**)

**79%**

Took time to learn about the cause or social issue (**LISTEN & LEARN**)

**78%**

Made a charitable donation to a cause or organization (**DONATE**)

**78%**

#### DATA TO INSIGHTS

Education was one of the top five issue areas of concern across all four countries we surveyed. This is perhaps unsurprising given the particular impact of the pandemic on education systems. At one point, 94% of children were out of school, and this will have a rippling effect for years to come.

When looking at the generational data, there are not a lot of variance between the four groups because each was impacted in some form or fashion. Gen Z were students in this disrupted system, and the other three generations had children of different ages who were impacted.

#### IN THE NEXT 30 DAYS, PEOPLE ARE MOST LIKELY TO:



**59%**



**59%**



**57%**